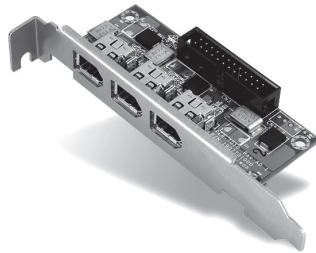
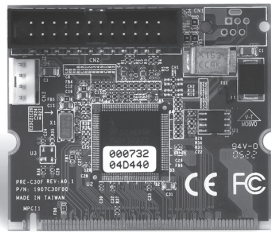


# PER-C30F

Mini PCI Module with 3-port IEEE 1394a



## Features

- Three IEEE 1394a Ports Up to 400Mbps
- TI Single Chip for IEEE 1394a Solution

## Packing List

- 1701240150  
Flat Cable
- 9697T01002  
PER-T010 daughter board
- Quick Installation Guide
- Utility CD
- PER-C30F

## Ordering Information

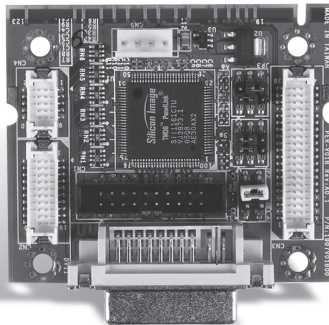
- TF-PER-C30F-A10  
Mini PCI, 3-port IEEE 1394a Module, Rev. A1.0

## Specifications

Form Factor	Mini PCI Type III A 2" x 2.35" (50.8mm x 59.6mm)
IEEE1394a Chipset	TI TSB43AB23
Power Requirement	+3.3V, +5V, +12V
Operating Temperature	32°F ~ 140°F (0°C ~ 60°C)

# PER-V01B

DVI to TTL Mini PCI Module



## Features

- DVI to TTL LCD Signal Conversion
- Resolution up to 1024 x 768

## Packing List

- Quick Installation Guide
- PER-V01B

## Ordering Information

- TF-PER-V01B-A10  
Mini PCI, DVI to TTL LCD, Signal Conversion Module, for 640x480 Panel, Rev. A1.0
- TF-PER-V01B-A10-01  
Mini PCI, DVI to TTL LCD, Signal Conversion Module, for 800x600 Panel, Rev. A1.0
- TF-PER-V01B-A10-02  
Mini PCI, DVI to TTL LCD, Signal Conversion Module, for 1024x768 Panel, Rev. A1.0

## Optional Accessories

- 1703200151  
20P-20P Terminal Cable

## Specifications

Form Factor	Mini PCI Type III A 2" x 2.35" (50.8mm x 59.6mm)
Signal Conversion Chipset	Silicon Image™ SiI1161CTU
Power Requirement	+3.3V
Operating Temperature	32°F ~ 140°F (0°C ~ 60°C)